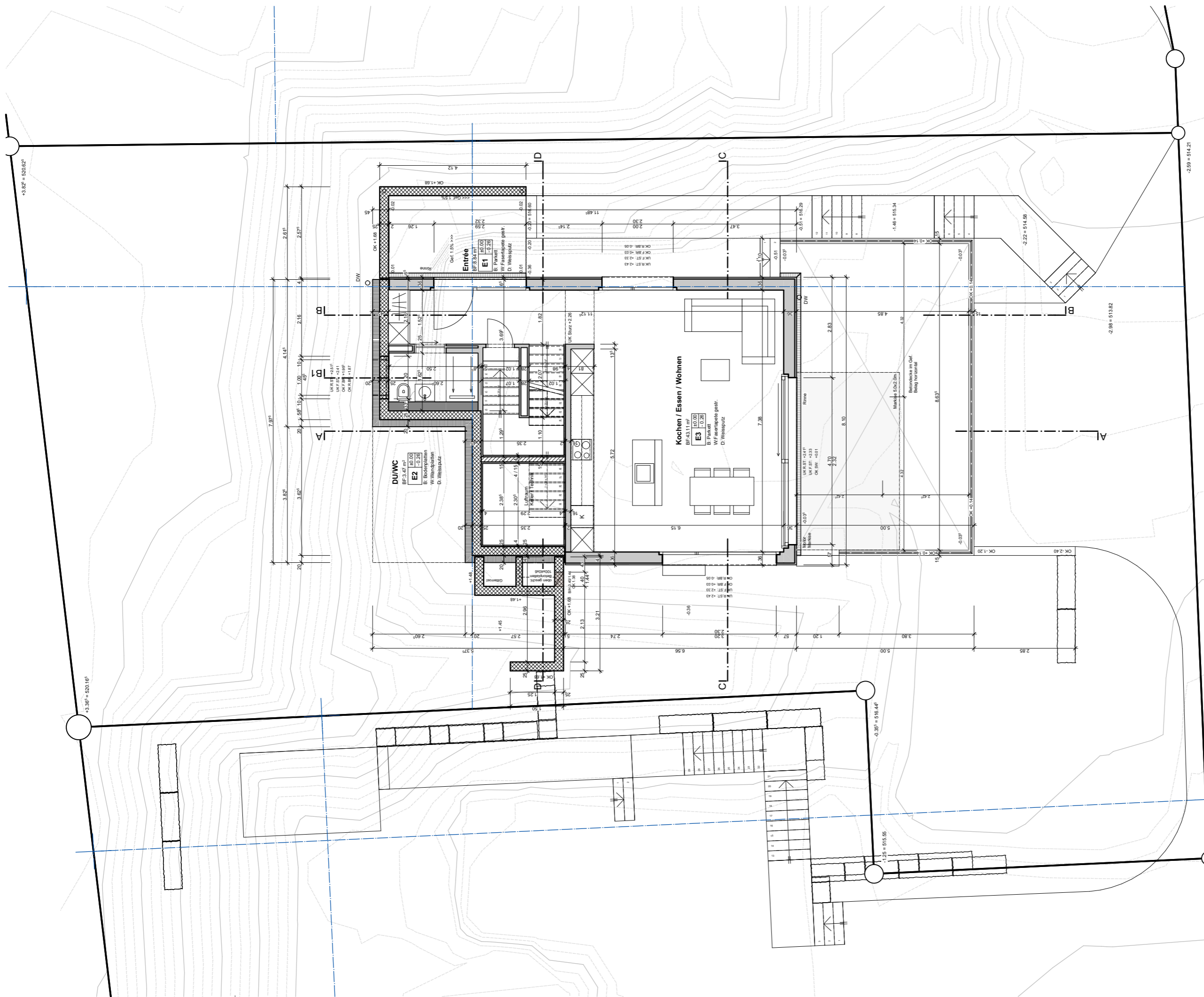


RENGGLI AG  
 St. Georgstrasse 2 041 925 25 25  
 CH-6210 Sursee 041 925 25 26

1151061 Walterswil Haus B 12  
 5746 Walterswil SO  
 Plan Nr. B12 REV 01, A3  
 18.09.2017 dho, REV



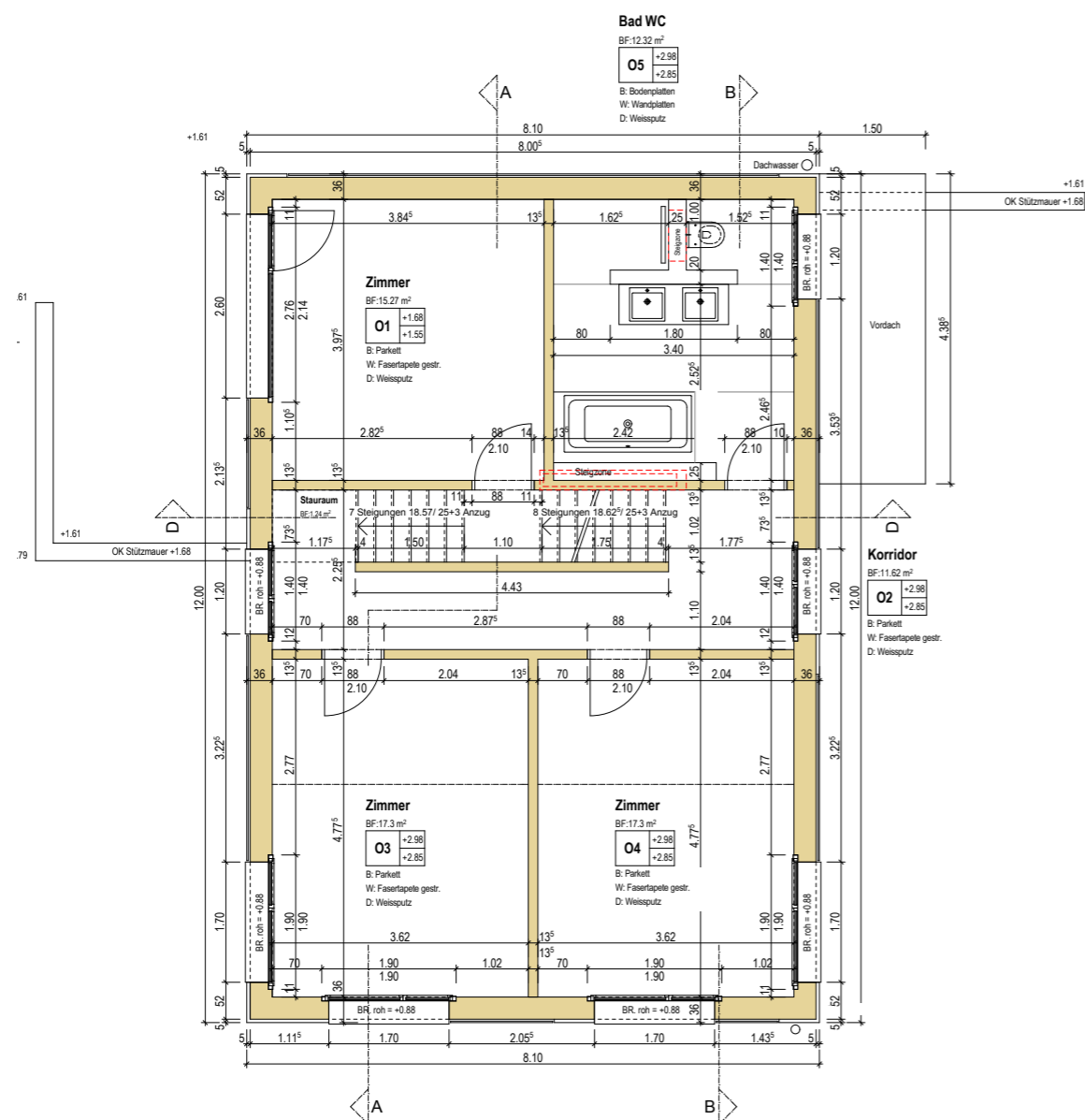
RENGGLI AG  
 St. Georgstrasse 2 041 925 25 25  
 CH-6210 Sursee 041 925 25 26

1151061 Walterswil Haus B 12  
 5746 Walterswil SO  
 Plan Nr. B12 REV 02, A3  
 18.09.2017 dho, REV

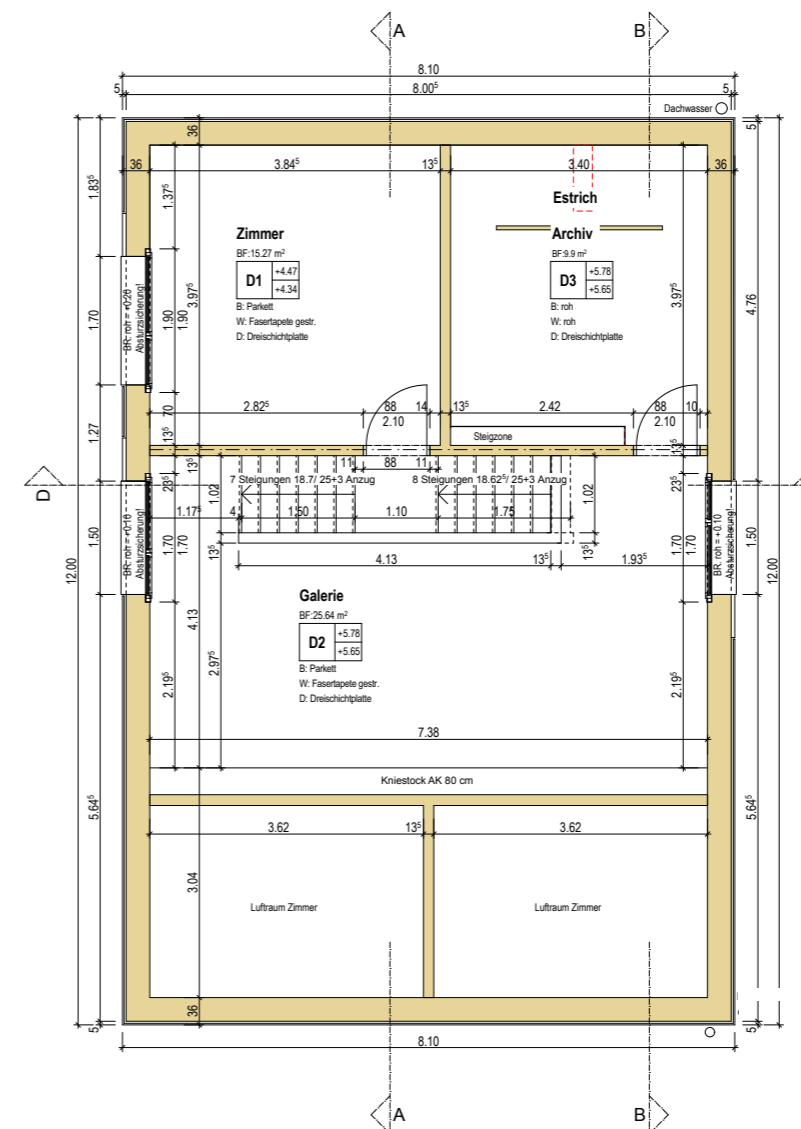
Erdgeschoss

1:100





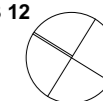
Obergeschoss

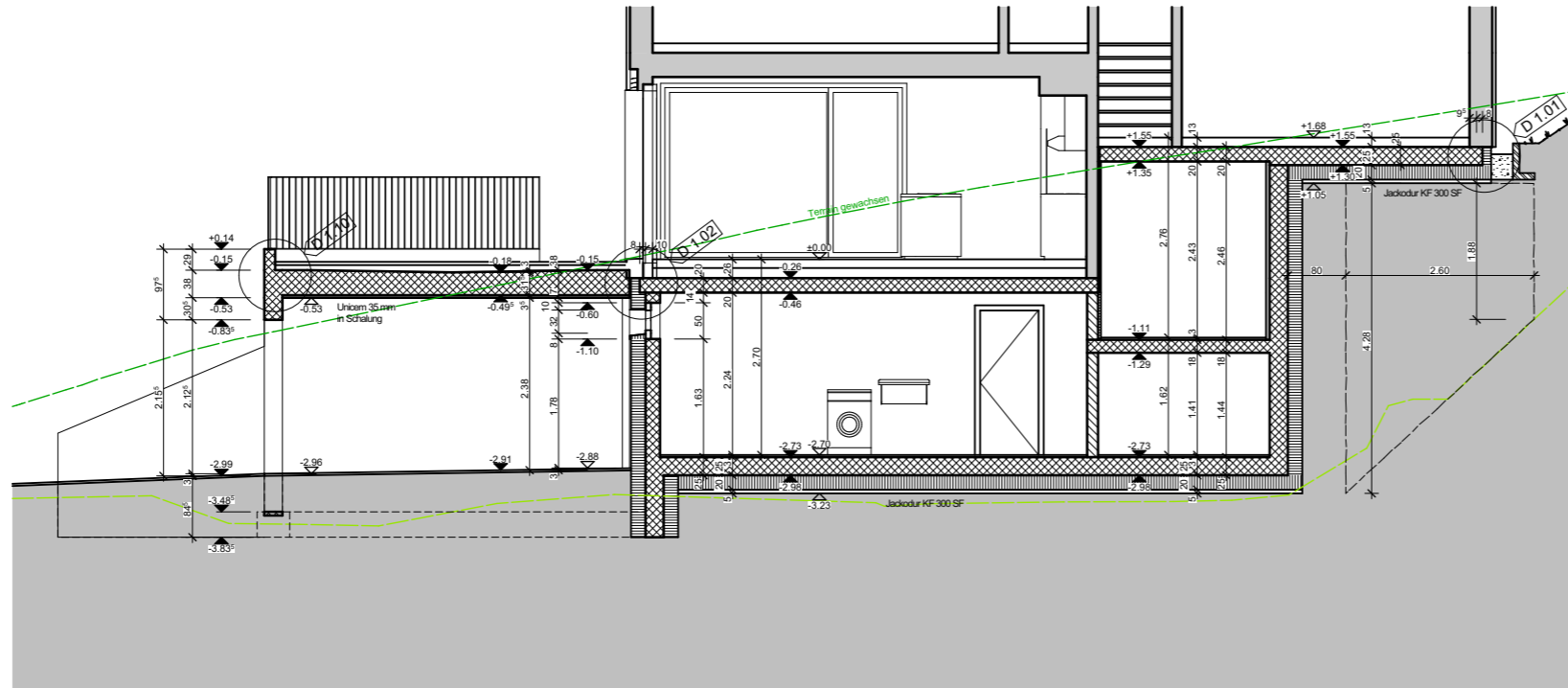


Dachgeschoss

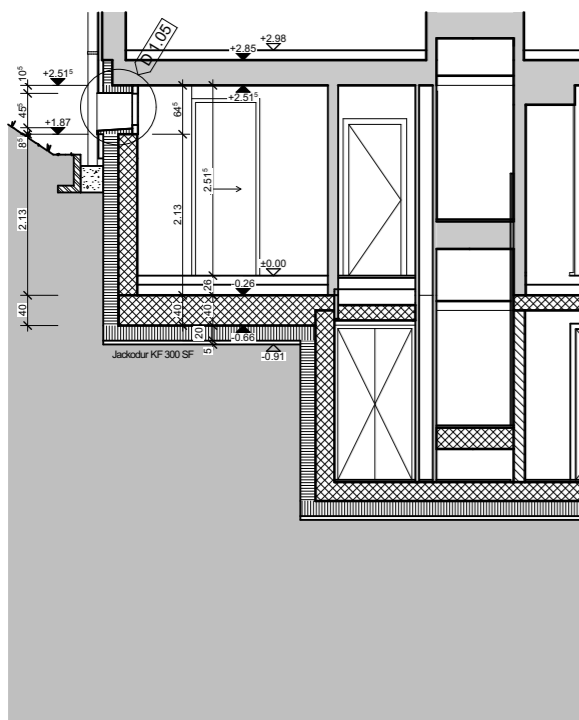
RENGGLI AG  
 St. Georgstrasse 2 041 925 25 25  
 CH-6210 Sursee 041 925 25 26

1151061 Walterswil Haus B 12  
 5746 Walterswil SO  
 Plan Nr. B12 REV 03, A3  
 18.09.2017 dho, REV

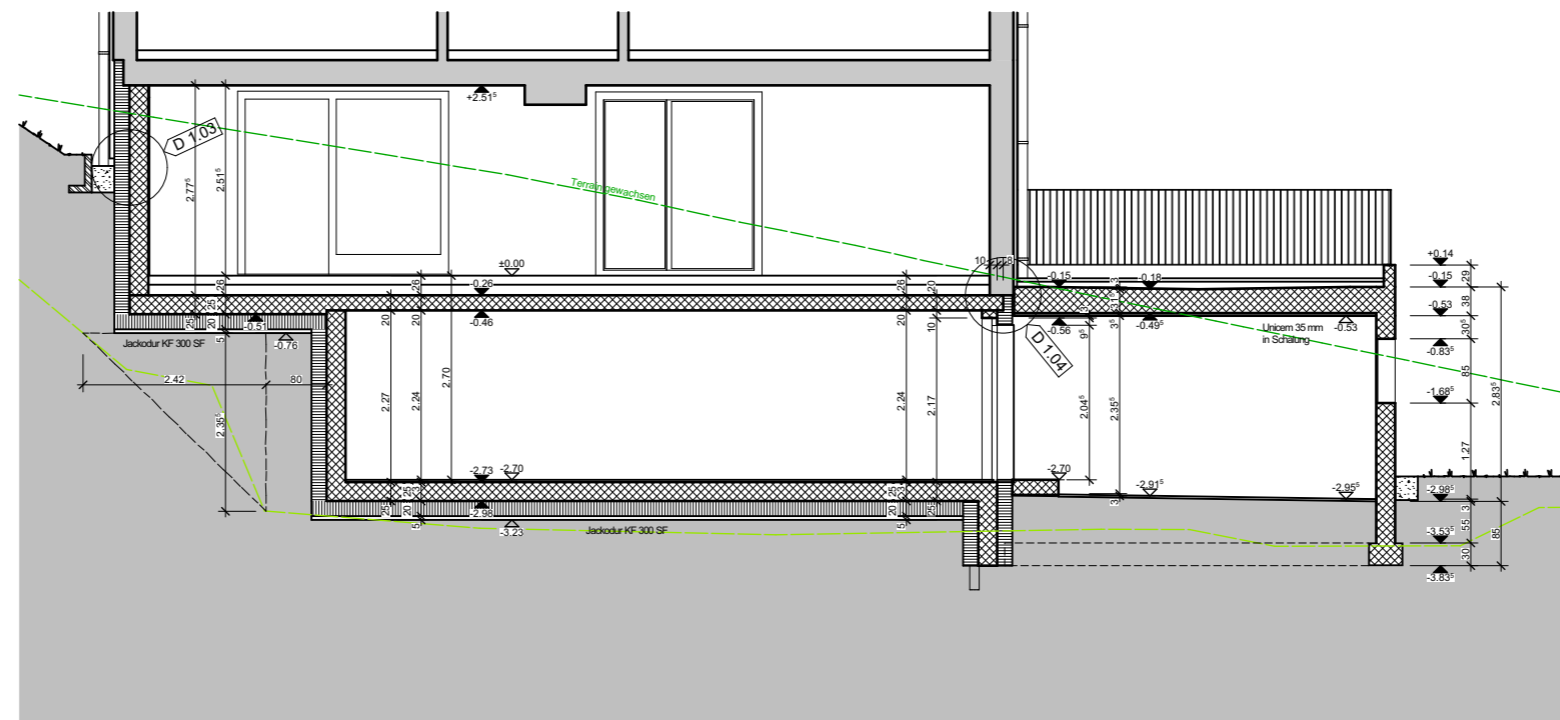




Schnitt A



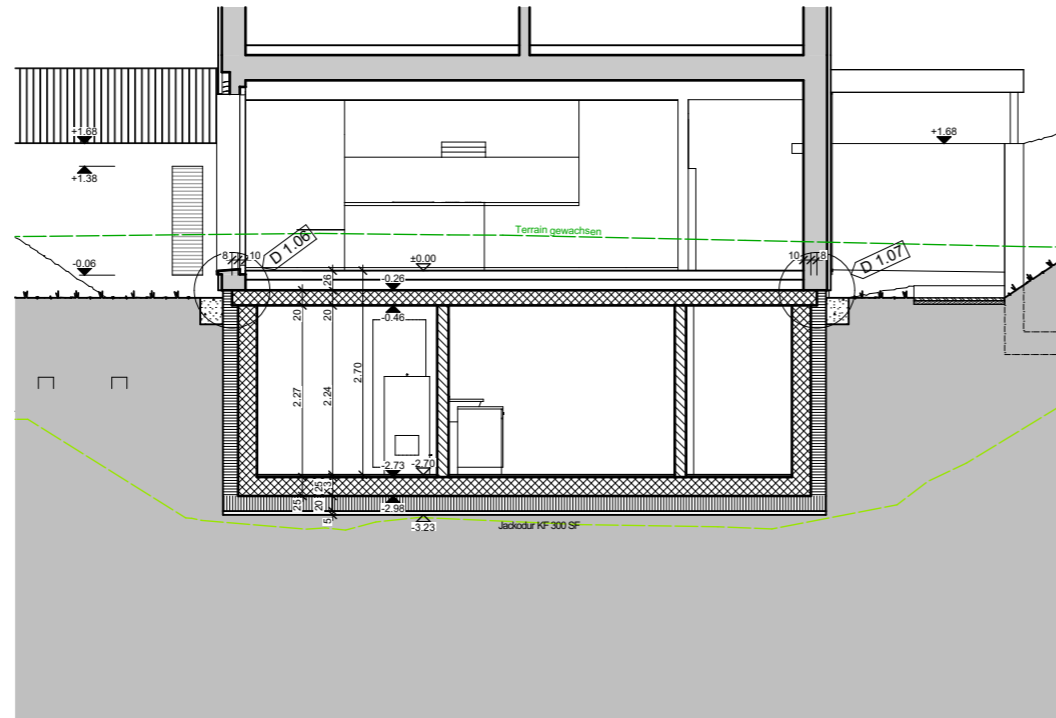
Schnitt B1



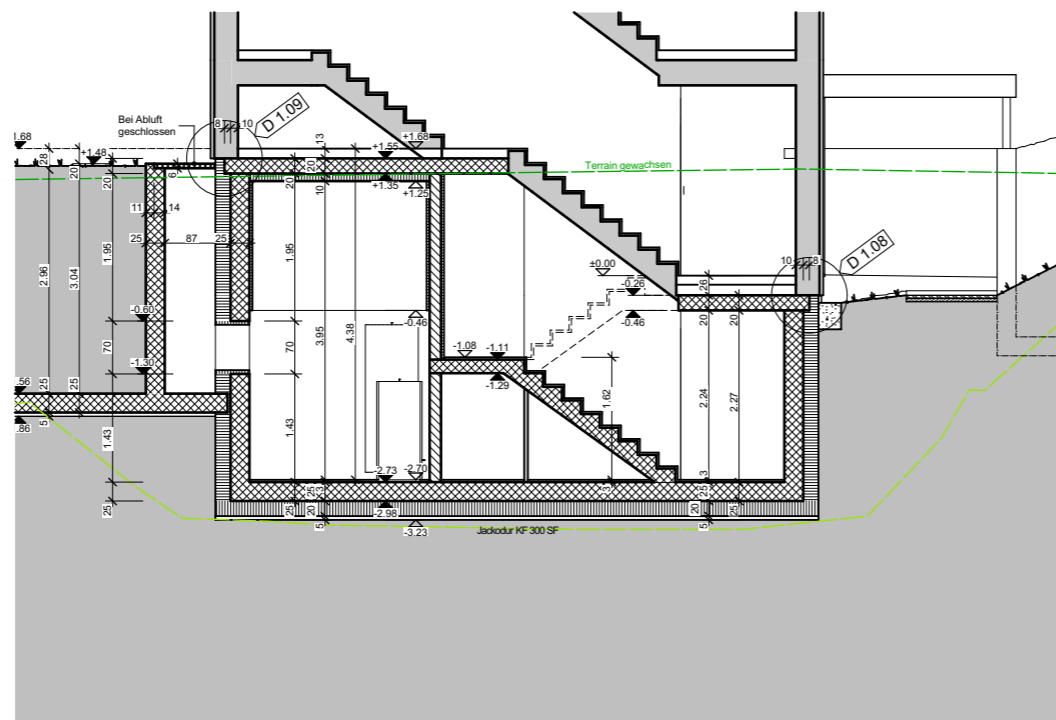
Schnitt B

RENGGLI AG  
 St. Georgstrasse 2 041 925 25 25  
 CH-6210 Sursee 041 925 25 26

1151061 Walterswil Haus B 12  
 5746 Walterswil SO  
 Plan Nr. B12 REV 04, A3  
 18.09.2017 dho, REV



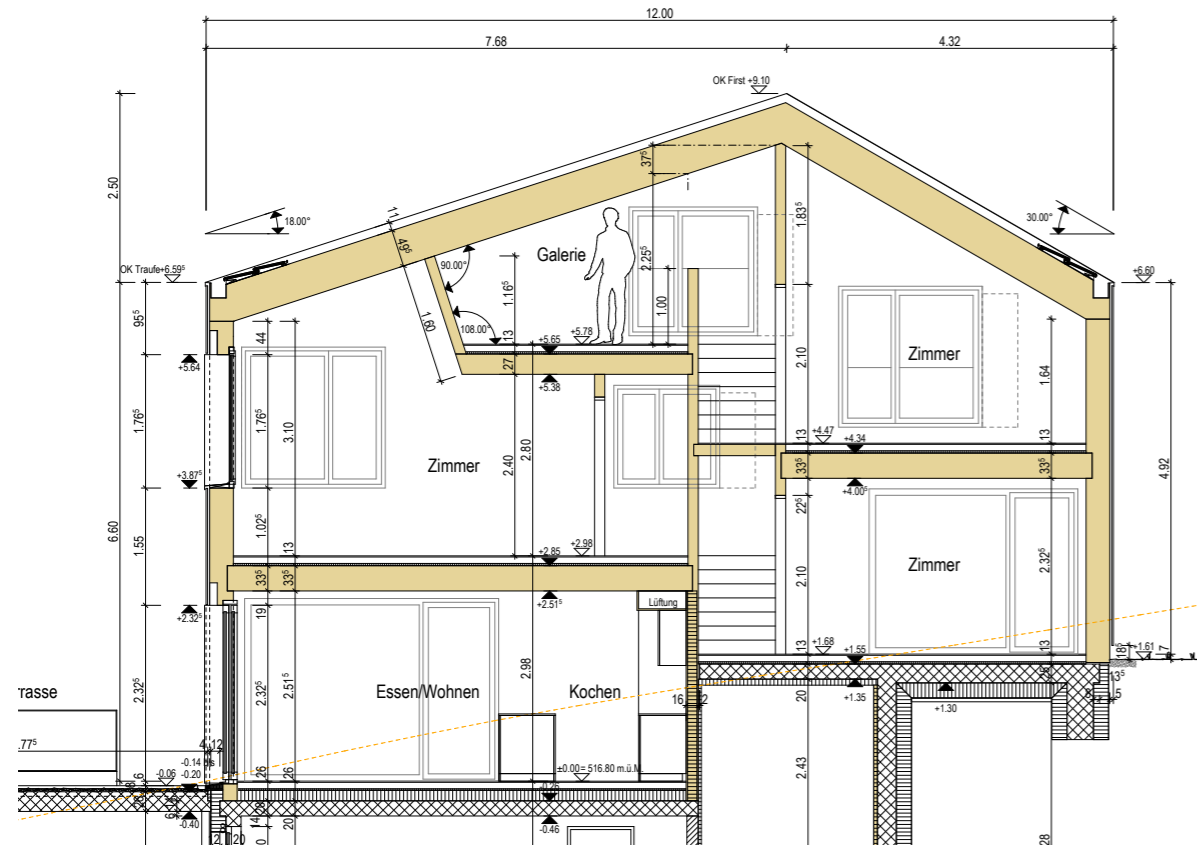
Schnitt C



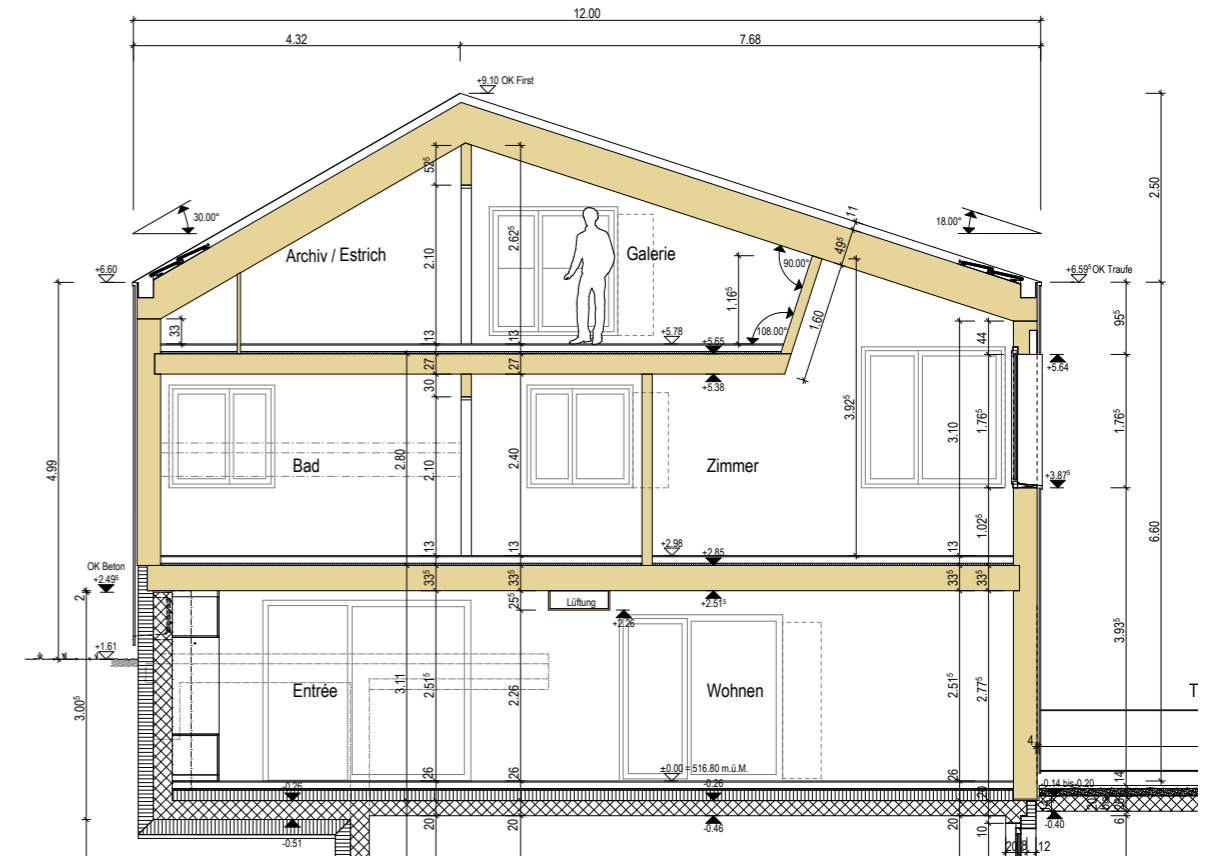
Schnitt D

RENGGLI AG  
 St. Georgstrasse 2 041 925 25 25  
 CH-6210 Sursee 041 925 25 26

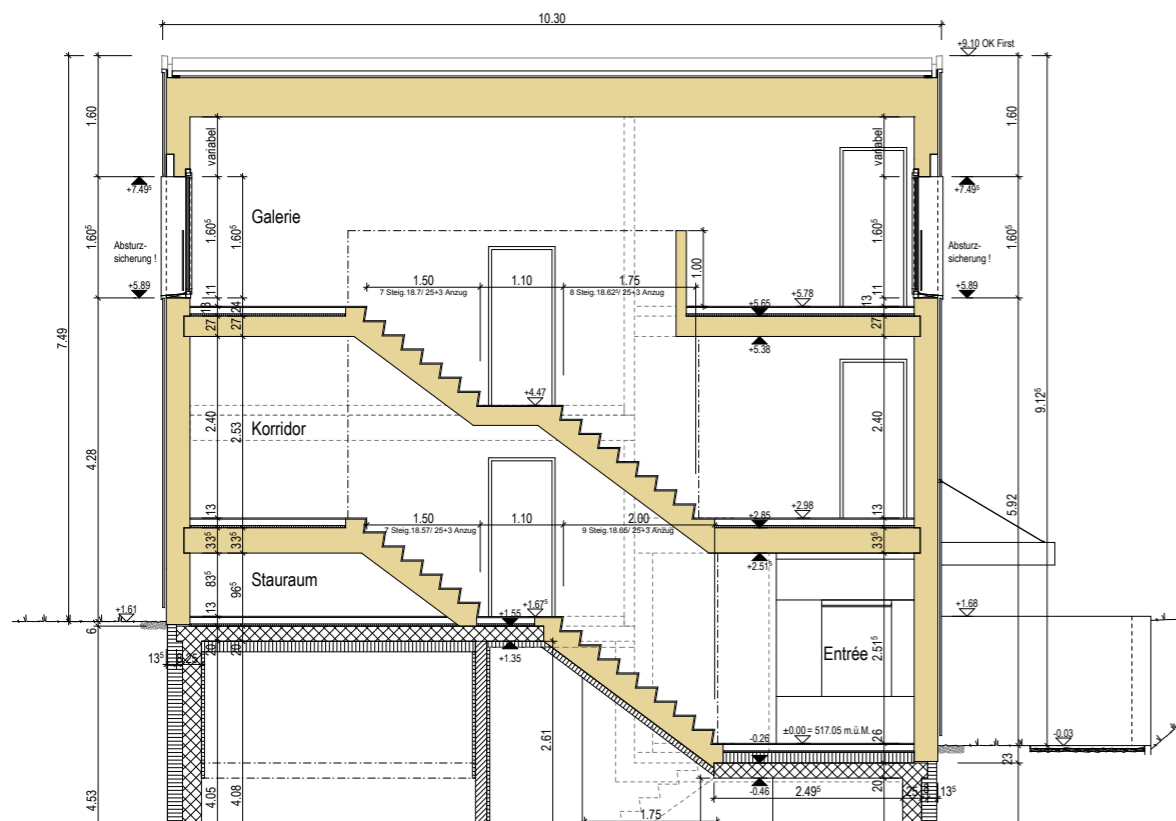
**1151061 Walterswil Haus B 12**  
 5746 Walterswil SO  
 Plan Nr. B12 REV 05, A3  
 18.09.2017 dho, REV



Schnitt A-A



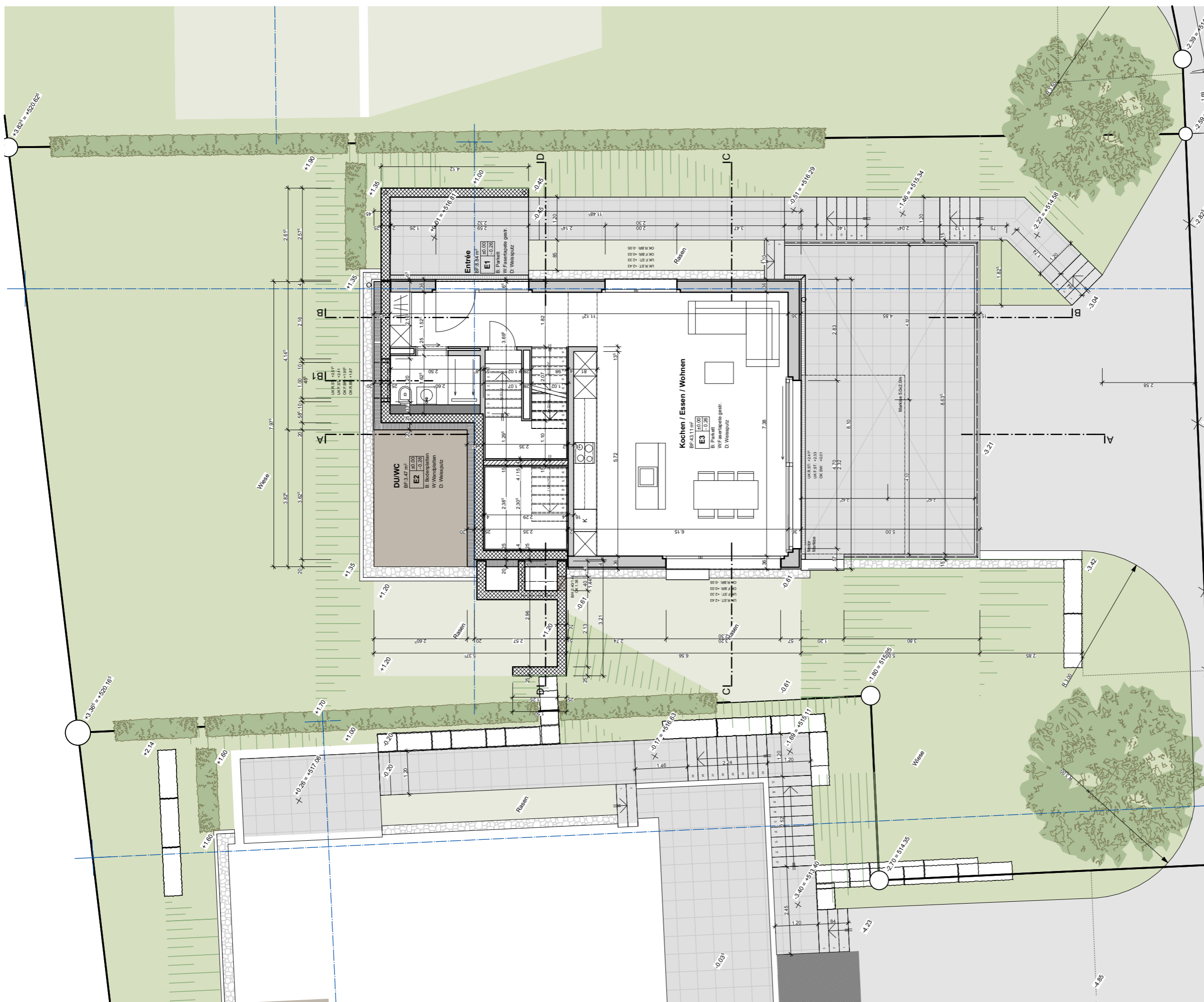
Schnitt B-B



Schnitt D-D

RENGGLI AG  
 St. Georgstrasse 2 041 925 25 25  
 CH-6210 Sursee 041 925 25 26

1151061 Walterswil Haus B 12  
 5746 Walterswil SO  
 Plan Nr. B12 REV 06, A3  
 18.09.2017 dho, REV



RENGGLI AG  
St. Georgstrasse 2 041 925 25 25  
CH-6210 Sursee 041 925 25 26

1151061 Walterswil Haus B 12  
5746 Walterswil SO  
Plan Nr. B12 REV 07, A3  
18.09.2017 dho, REV

